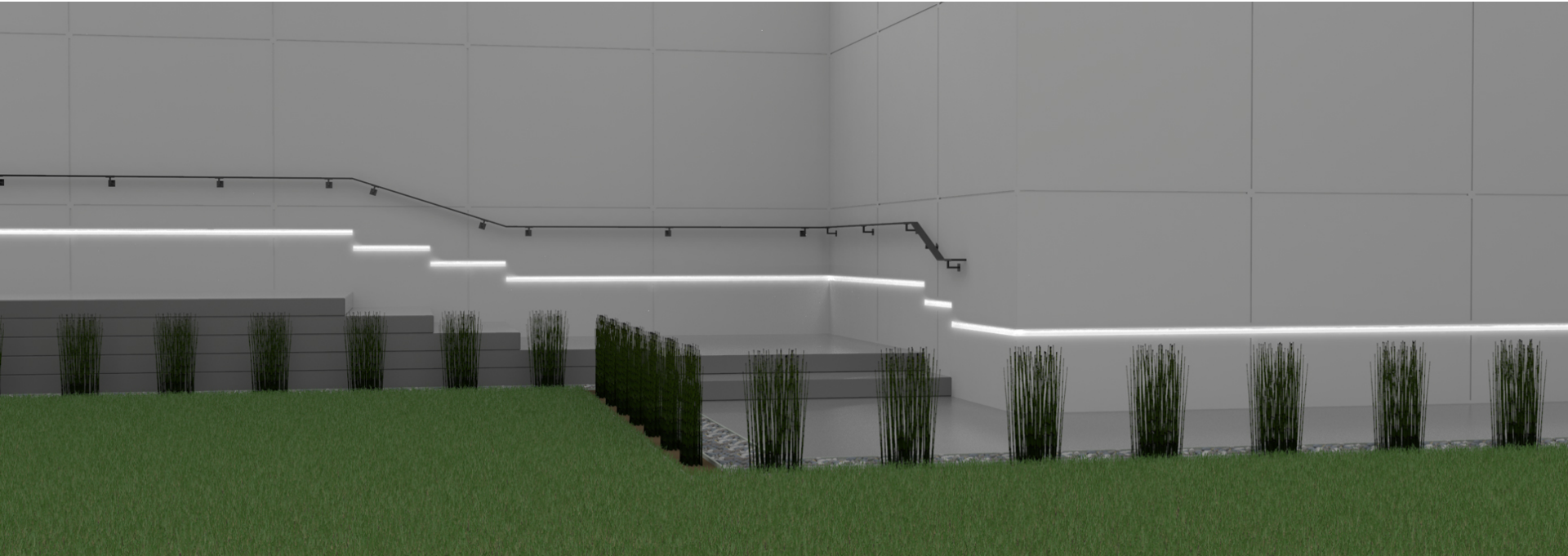


**LLED8000-WMI
PRODUCT LAUNCH
DECEMBER 2020**



A WALL MUD-IN SYSTEM WITH CONCEALED LED SOURCE.



We proudly introduce LLED8000-WMI to the lipLEDs family. LLED8000-WMI is a slim profile integrated linear lighting system strategically designed for wall mud-in applications.

LLED8000-WMI delivers a stunning line of light and is effective in making design concepts come to life with a variety of options such as color temperatures, watts per foot and finish options.

FEATURES

LLED8000-WMI is designed with efficient features to achieve the best seamless and integrated application. Due the flexibility that is needed in dry, damp, and wet locations in a variety of architectural design spaces, LLED8000-WMI now caters to those needs.

FLANGE ARMS ON ALL SIDES

With mud-in installation, all flange arms are concealed so that only the glow emitting from the fixture is seen.

SLIM PROFILE

LLED8000-WMI has a slim profile overall dimension that is efficient in a variety of spaces requiring a slim line of light.

LENS OPTIONS

LLED8000-WMI offers frosted or semi-frosted lens options, which deliver line of light or slight diode image.

☀️ DRY/DAMP/WET LOCATION | WALL TO WALL



☀️ DRY/DAMP LOCATION | WALL TO WALL



FACTORY-BUILT CORNERS

Installation is now more efficient by avoiding field cutting and other miter angle options can be custom built to your design needs.



90° EXTERNAL CORNER

Your lighting design can wrap around external corners without dark spots.

LLED8000-WMI-90D-EX



90° INTERNAL CORNER

Thoughtfully designed to maintain a seamless line of light in internal corners.

LLED8000-WMI-90D-IN



CALI

CALIFORNIA ACCENT LIGHTING, INC.

2820 E. Gretta Lane Anaheim, CA 92806

ph. 800.921.CALI | fx. 714.535.7902 | info@calilighting.com | calilighting.com

© CALI. All rights reserved. CALI reserves the right to make changes or withdraw specifications without prior notice.

